

# How to Properly Canonical a Domain in IIS6

Brent D. Payne

@BrentDPayne

# Getting Started

Name	Size	Type	Date Modified	Attributes
Active Directory Domains and ...	1 KB	Shortcut	12/18/2005 5:07 PM	A
Active Directory Sites and Ser...	1 KB	Shortcut	12/18/2005 5:07 PM	A
Active Directory Users and Co...	1 KB	Shortcut	12/18/2005 5:07 PM	A
Certification Authority	2 KB	Shortcut	12/15/2005 2:02 PM	A
Cluster Administrator	2 KB	Shortcut	11/8/2007 5:16 PM	A
Component Services	2 KB	Shortcut	12/15/2005 2:00 PM	A
Computer Management	2 KB	Shortcut	12/1/2007 1:29 PM	A
Configure Your Server Wizard	2 KB	Shortcut	12/21/2007 1:11 AM	A
Data Sources (ODBC)	2 KB	Shortcut	12/15/2005 2:02 PM	A
Distributed File System	2 KB	Shortcut	1/5/2006 3:38 PM	A
DNS	2 KB	Shortcut	11/8/2007 5:17 PM	A
Domain Controller Security Pol...	1 KB	Shortcut		
Domain Security Policy	1 KB	Shortcut		
Event Viewer	2 KB	Shortcut		
Internet Information Services...	2 KB	Shortcut		
Licensing	2 KB	Shortcut		
Manage Your Server	2 KB	Shortcut		
Microsoft .NET Framework 1....	2 KB	Shortcut		
Microsoft .NET Framework 1....	2 KB	Shortcut		
Network Load Balancing Mana...	2 KB	Shortcut		
Network Monitor	2 KB	Shortcut		
POP3 Service	1 KB	Shortcut		
Remote Desktops	2 KB	Shortcut		
Routing and Remote Access	2 KB	Shortcut		
Server Management	1 KB	Shortcut		
Services	2 KB	Shortcut		
Terminal Server Licensing	2 KB	Shortcut		
Terminal Services Configuration	2 KB	Shortcut		
Terminal Services Manager	2 KB	Shortcut		
Web Interface for Remote Ad...	1 KB	Shortcut		

## Administrative Tools

- Go to Administrative Tools

## Internet Information Services

- Select Internet Information Services

# Selecting an Existing Web Site or Creating a New Web Site

**OR...**

**1**

**2**

**3**

**1**

**2**

**Web Sites**

- Select the Websites Folder

**Edit an Existing Domain**

- If the Domain You Wish to Redirect Already Exists, Right Click and Select Properties

**Create a New Domain**

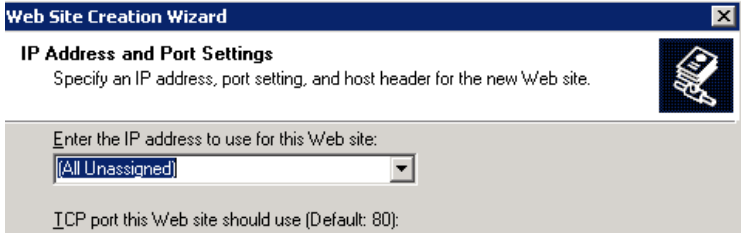
- If the Domain You Wish to Redirect Does NOT Exist, Right Click Web Sites, Select New

# Create a New Web Site (If Necessary)

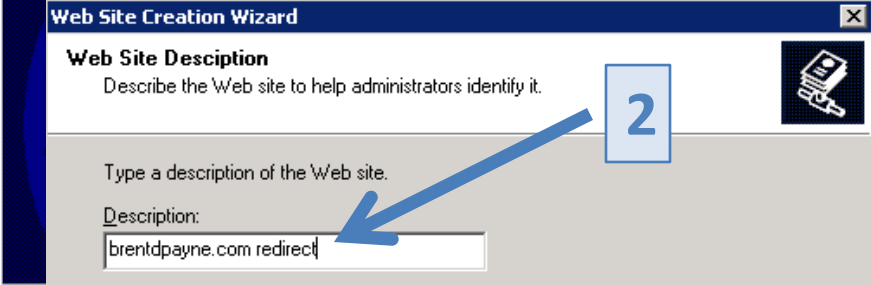
1



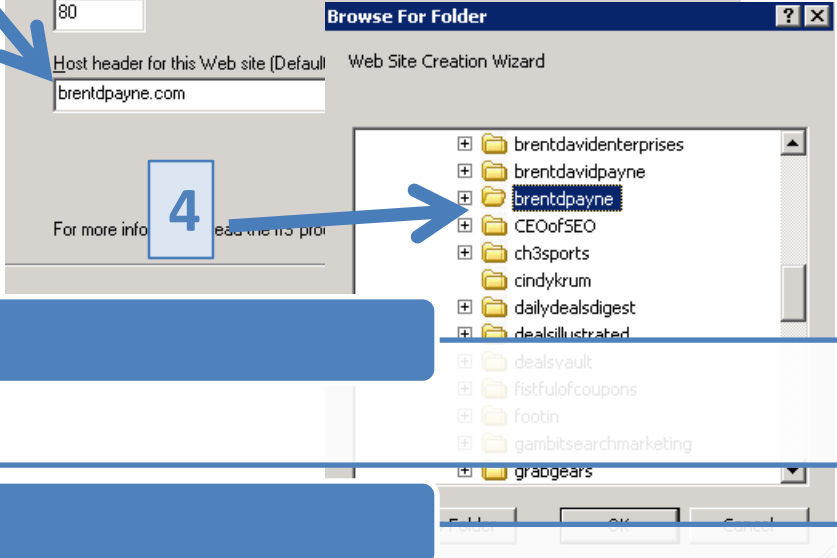
3



2



4



## Step 1 & 2

- Non-Critical: Select a Description That's Convenient

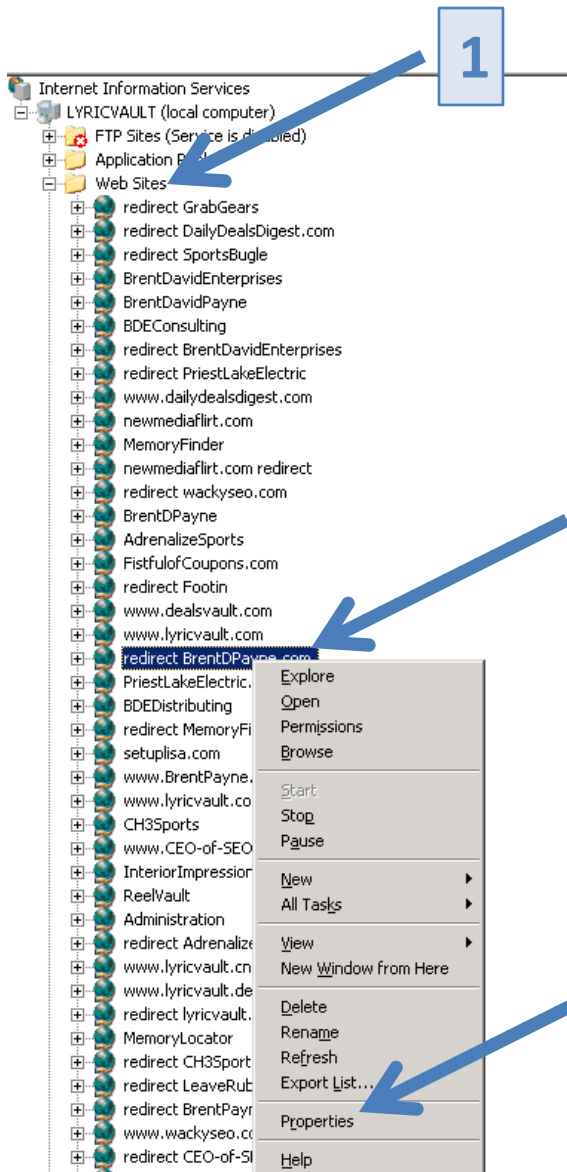
## Step 3

- **Critical:** You Must Enter the Host Header of the Domain **You Wish to Redirect** (i.e. brentdpayne.com vs. www.brentdpayne.com)

## Step 4

- Non-Critical: You are Going to Redirect Whichever Location You Choose Later

# Selecting the Properties of the Domain



## Web Sites

- Select the Websites Folder

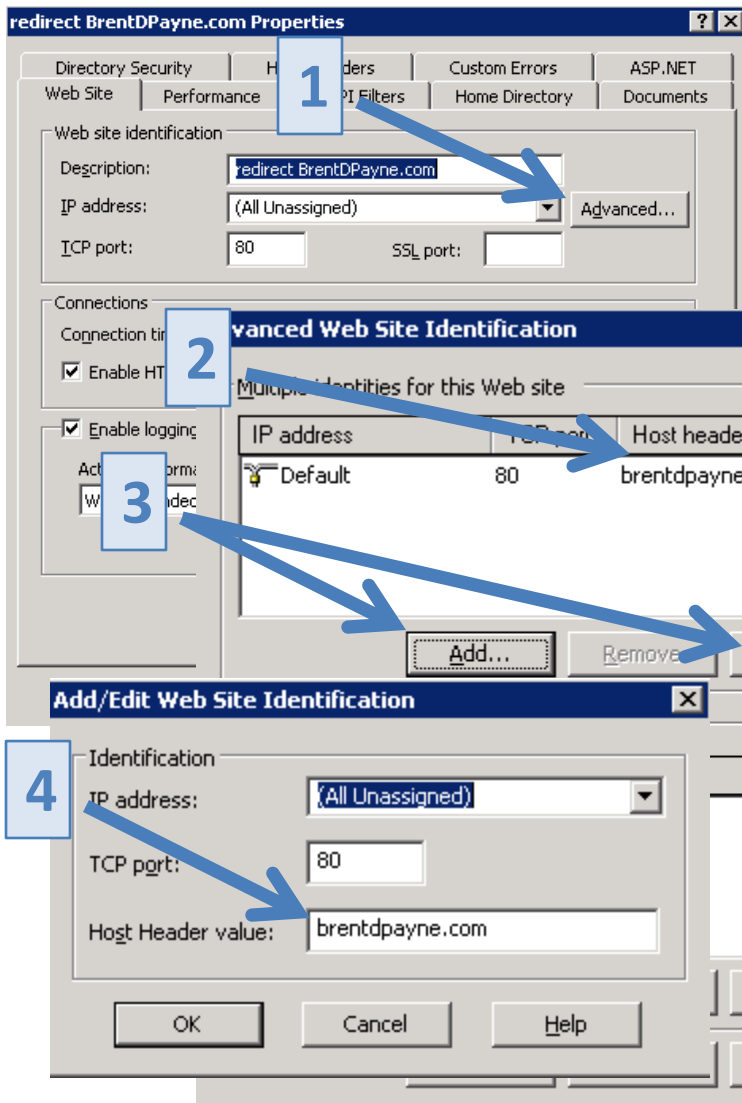
## Select the Web Site's Properties

- Right Mouse Click on the Web Site You Wish to Redirect
- NOTE: This should NOT be the domain of the site you wish to keep (an easy mistake).

## Select Properties

- Select Properties
- Note: Make sure this is for the Web Site you wish to redirect (yes, repeating it again).

# Verify the Host Header Properties Are Accurate



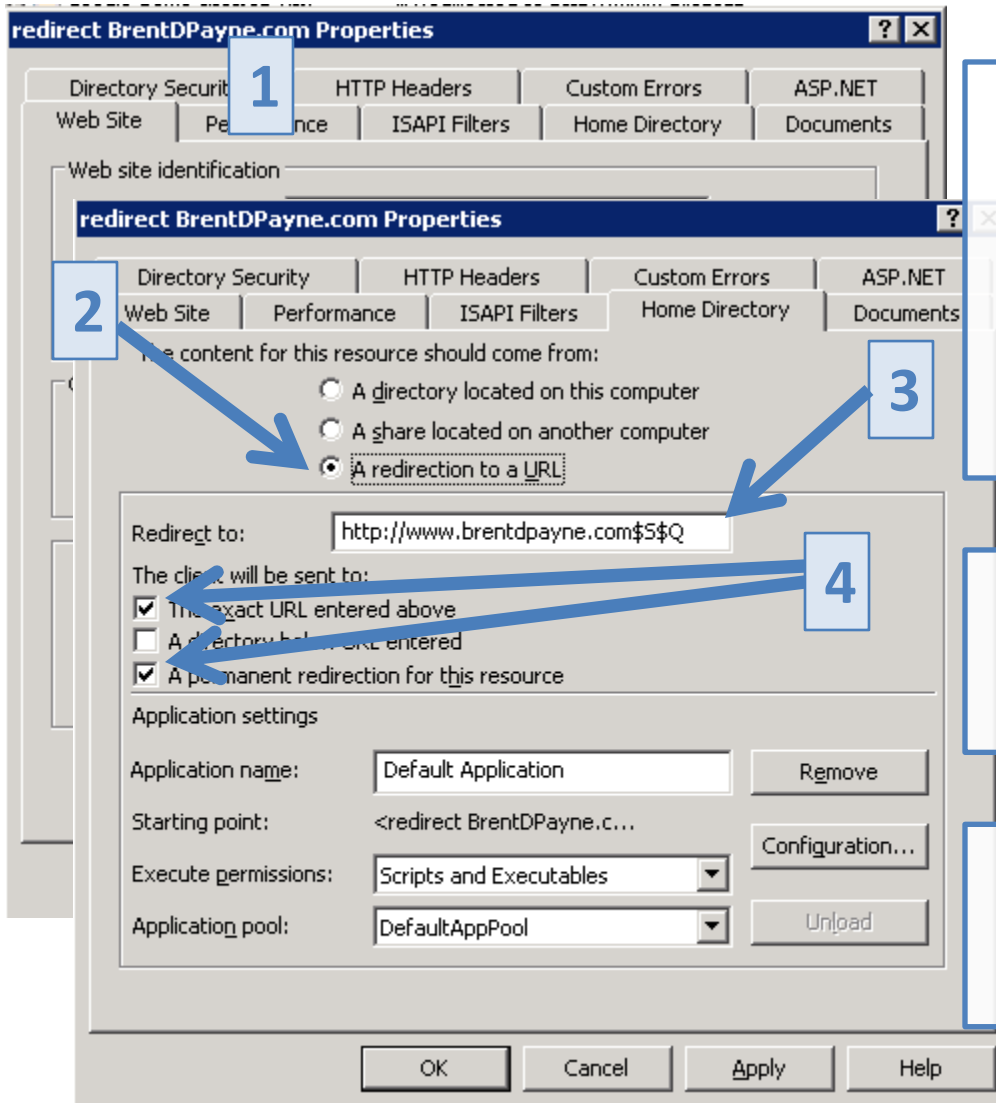
## Web Site Properties Tab

- Select the Advanced Tab

## Verify/Add Information

- Make Sure Host Header Value is Properly Entered (Should be the domain you wish to redirect)
- Add Any Additional Host Headers You Wish to Redirect

# Redirect the Web Site to the Desired Location



## Redirection to a URL

- Select the Redirection to a URL Radial Button
- Enter the URL of the Destination **WITHOUT** a trailing slash
- **Append \$\$\$Q** to Properly Redirect All Subfolders and Queries

## Force All Canonicalization

- Check 'The Exact URL entered above' box

## Make it a 301 Redirect vs. 302

- Check the 'A Permanent redirection for this resource' box

# Contact Info

**Brent D. Payne**

- **Director, Search Engine Optimization**
- **Tribune Company, 435 N. Michigan, Chicago, IL 60611**
  - Phone: 312.324.3344
  - Instant Messenger/Personal Email:  
[bpayne@gmail.com](mailto:bpayne@gmail.com)
  - Twitter: @BrentDPayne (follow w/ caution)
  - Driver's License Number: BDP24456U8
  - Passport Number: 46645347666